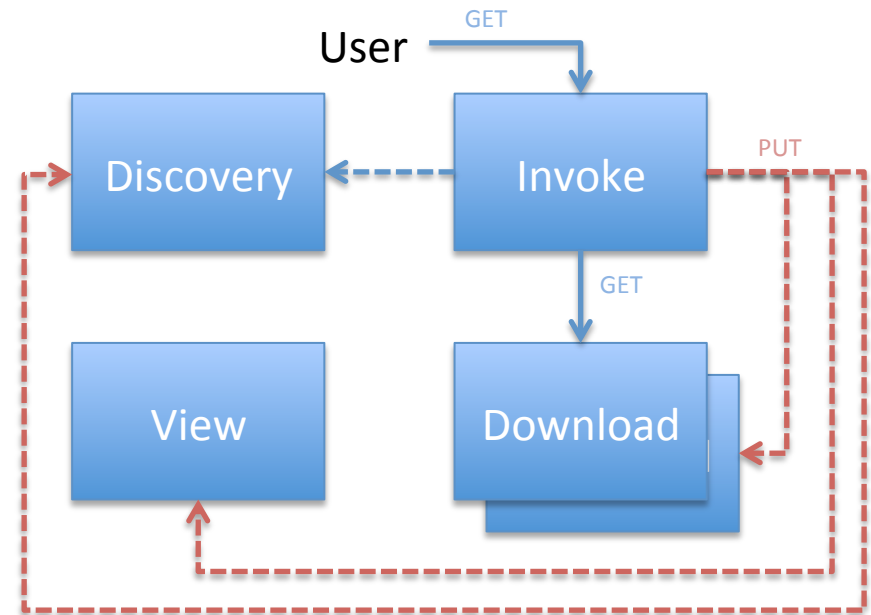
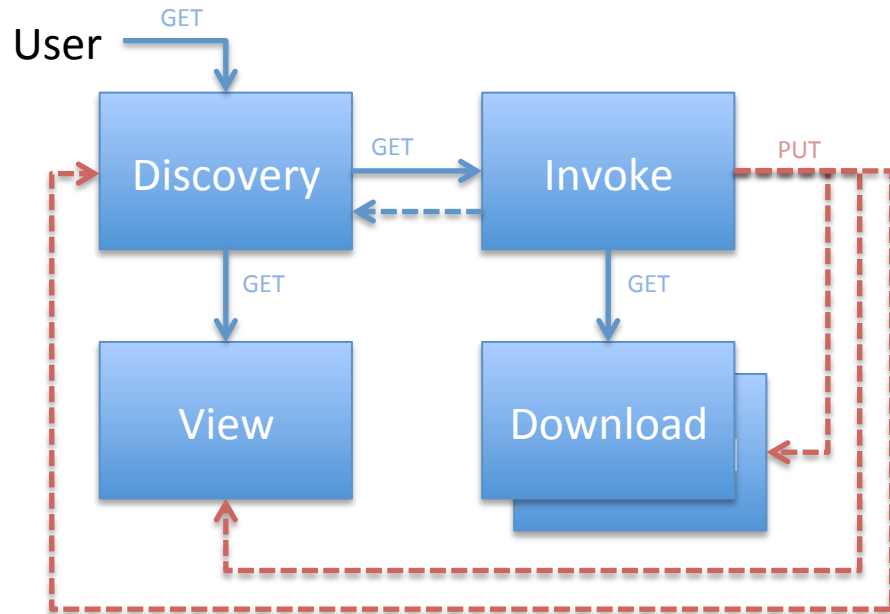


- ▶ **Discovery** – Data Catalogue server (EO Products, Processing results)
 - Searching for Dataset Series (collections) -> Collection metadata
 - Searching for Datasets (Products/Results) -> Product metadata
 - Management: POST/UPDATE/DELETE Dataset Series & Datasets metadata
- ▶ **View** – Image server (EO Products Browse/Quicklook images, Processing results)
 - Retrieve images at various locations and resolutions (enabling Zoom/Pan in visualization tools)
 - Management: PUT/UPDATE/DELETE Image Layers & Images
- ▶ **Download** – Product server
 - Download product
 - single or multiple files
 - With or without On-the-fly generation
 - With or without retrieval from Long Term Archive
 - Product Access optimized for **Invoke** services (Processing services)
 - Access to the output of **Invoke** services
 - Management: PUT/UPDATE/DELETE Products
- ▶ **Cost/Quota/Authorisation Management** for each of the above

Typical Scenario in Exploitation Platform



Main objectives: more web developer oriented, more open to non EO domains

- On Discovery service:
 - ▶ Json encoding of EO-OpenSearch response (json-ld ? geoJson ? A mix ?)
 - ▶ Json encoding of the eop metadata attributes (simplified model ?)
 - ▶ Consolidation OGC-126r4 based on CEOS/WIGISS OpenSearch Best Practice
 - ▶ Various comments on eop data model
- On View service:
 - ▶ Support WMTS (with time) as a possible way to convey browse information in the EOP data model
- On Download:
 - ▶ Json/html encoding of OGC-15-043 Download Service for EO products Best Practice
 - ▶ WCS

- Propose/follow-up evolutions of relevant standards to OGC
- Define Standards Baseline/Best Practice applicable to “EO Exploitation Platform”
- “Implement” an open source catalogue service compliant to the Standards Baseline and pre-operate it as a service (including management API)