

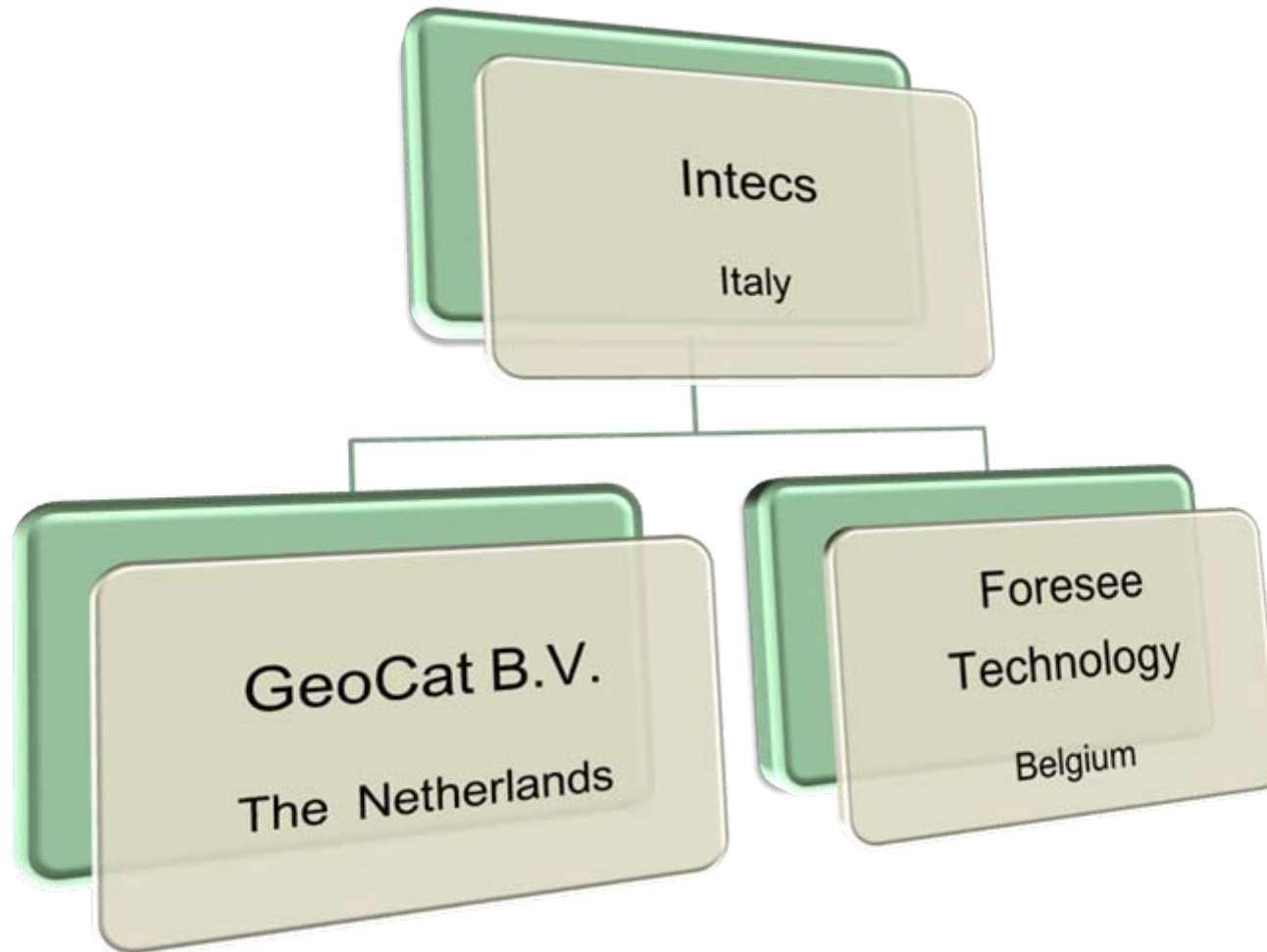
# ERGO

**Pier Giorgio Marchetti EOP-GR**

**Simone Gianfranceschi INTECS**

**[pier.giorgio.marchetti@esa.int](mailto:pier.giorgio.marchetti@esa.int)**

- The aim of this project is to develop Collection and Service discovery and Catalogue search interfaces using the OMAR and GoeNetwork opensource packages.
- Moreover the updated OMAR EbRim software will be integrated in the SSE Toolbox.



- Buddata ebXML Registry/Repository (or ebRR in short) is an open source implementation of the OASIS ebXML Registry and OGC Catalogue Service.
- Buddata ebRR put's a strong focus on its geospatial capabilities and the goal of the project is to include all so-called "ebRIM Profiles" or "extension packages" as defined by the OGC Catalogue Service, but also to support any other ebRIM profiles.

- Natively it implements (Secured) SOAP Web Service interfaces based on the OASIS ebXML RS 3.0 and OGC Catalogue Service specifications.
  
- Its main other features are
  - a harvesting component with transformation capabilities to translate XML-based metadata in GML and ISO formats to ebXML RIM (with OGC geospatial extensions)
  - a Java API to access the ebRR directly from Java code.
  
- Buddata ebRR is distributed via an GPL v3 open source license via Google Code.

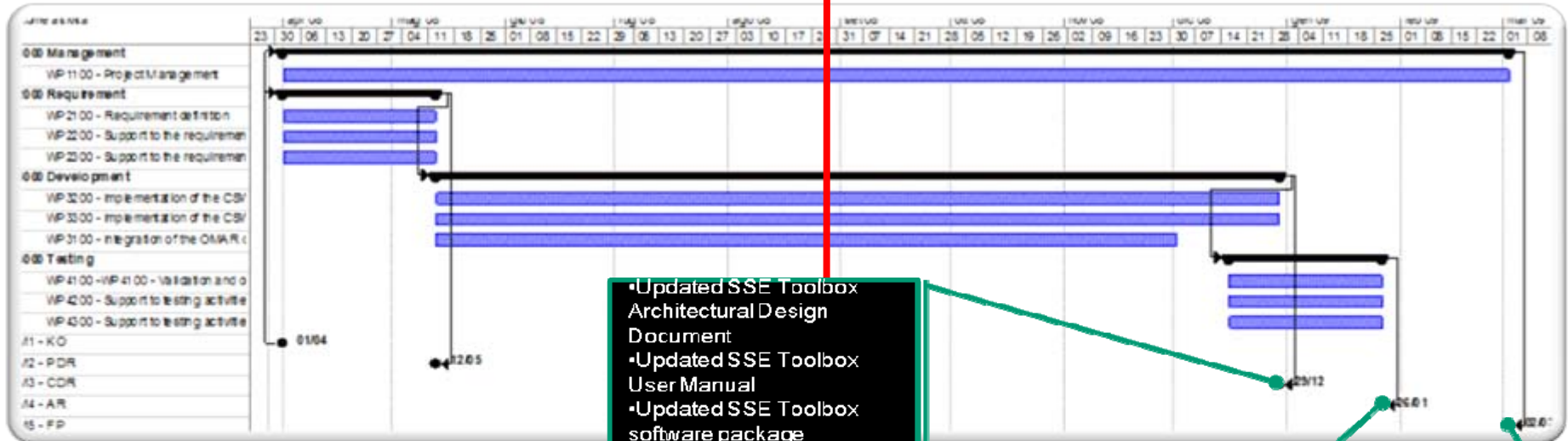
- GeoNetwork opensource is an established, standards based, Free and Open Source catalog application to manage spatially referenced resources through the web.
  
- It provides
  - metadata editing and search
  - an embedded interactive web map viewer.

- Implement CSW based on the ebRIM profile using the ISO19115/19119 metadata extension package
- Support storage and retrieval of large numbers of metadata records
- CSW ebRIM should enhance existing GeoNetwork functionality, not replace.

- The SSE Toolbox is an opensource web service publishing framework.
- It natively support:
  - The SSE interfaces
  - The EOLI interfaces
- Publishing based on an XML scripting language
- Support for synchronous and asynchronous (WS-Addressing) operations.
- Support for human interaction
- Web based monitoring interface
- Eclipse based development environment



- Proxy approach
  - Integration of legacy catalogues based on the XML scripting language
- Stand alone approach
  - Integration of the ebXML catalogue as plug-in
  - Deployment of data via scripting
- Built in catalogue client



- Updated SSE Toolbox Architectural Design Document
- Updated SSE Toolbox User Manual
- Updated SSE Toolbox software package
- Geospatial OMAR Architectural Design Document
- Geospatial OMAR Installation and User Manual
- Geospatial OMAR software package
- GeoNetwork Architectural Design Document
- GeoNetwork Installation and User Manual
- GeoNetwork Software package
- Acceptance Test Plan
- Conformance Test Plan
- Updated Toolbox Test Plan

- Validated GeoNetwork opensource software
- Validated OMAR software
- Test Data package
- OMAR Acceptance Test report
- OMAR Conformance test report
- GeoNetwork Acceptance Test report
- GeoNetwork Conformance test report
- Toolbox Acceptance Test Report

- Excel file including all the RIDs issued during the course of the project
- Project executive summary including lessons learnt
- Final Technical Data Package